

Winter Issue 2016

Monday-Thursday
Lobby & Drive Thru 8:00am-4:30pm

Friday
Lobby 8:00am-4:30pm
Drive Thru 8:00am-5:30pm

Saturday
Lobby & Drive Thru 9:00am-noon

Location:

1275 North Raymond Road
Battle Creek, MI 49014

(269) 965-1381
Fax: (269) 965-0034
Loan Fax: (269) 965-6558

www.grandtrunkcu.com

Holiday Closings:

President's Day
Monday, February 15

Good Friday
Friday, March 25



You can visit more than 250 of our shared
branch locations. To find out more visit
grandtrunkcu.com or call (800) 524-2402

LOG IN TO MOBILE BANKING
for a chance to win an
XBOX ONE!



Ask us how today!

Message to Members

Dear Members,

Keeping on Track with Technology

A New Year brings new technology and improvements to your credit union. Our staff has been working extremely hard on all the technology advancements and are proud to get them out to you. Over the next few months we will be implementing all the hard work. We are so excited to share the excitement with you. See below what's happening just in the first quarter of the year.

Exciting news for those members who have taken advantage of our VISA credit card program. We now will have it live within **It's Me 247** as of January 19, 2016. You will be able to check out your balances, make payments, and look at the history of your transaction. All these features will be right at your fingertips with just a single sign on. We can even set up your normal monthly payment right up to your direct deposit. Just give us a call and we can help set it up for you. Another great feature, your credit card statement will be mailed with your normal monthly credit union statement.

Coming in Mid-February is an all new look to online bill pay. We know this is an adjustment for our members, and we ask for the support to continue to serve you in the best manner possible. Once online in **It's Me 247** please sign up for the bill pay feature and go through the steps to accept the agreement and enter in your active bills. If you need help or have any questions please contact the credit union and we will be available to help you through the process.

Lastly we will begin issuing our Chip and Pin cards starting in January for our VISA credit card holders. As your cards expire you will receive a new Chip card and Pin. Our MasterCard Debit/ATM cards will begin the reissue process as early as March. This will happen the same way as your cards expire you will receive a new Chip enabled card.

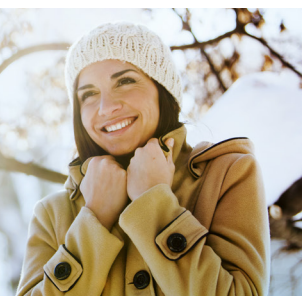
ATTENTION all members with an ATM card. As early as March you will receive an ATM MasterCard with chip technology. This card is a debit card with ATM only features. If you would like to apply for a debit card please contact the credit union to find out what will need to be done. All debit card members must have a checking account for the debit card features.

Thank you for your membership,

LuAnn M. Schott
Manager/Treasurer

Signature Loan Special

7% for 12 months for qualified members
Effective: 11/01/15 - 01/31/16



Grand Trunk (BC) Employees Federal Credit Union is an
Equal Housing and Equal Opportunity Lender.



Your savings federally insured to at least \$250,000 and
backed by the full faith and credit of the United States
Government. NCUA a U.S. Government Agency.



GRAND TRUNK (BC)
EMPLOYEES FEDERAL CREDIT UNION

Winter Issue 2016

Monday-Thursday
Lobby & Drive Thru 8:00am-4:30pm

Friday
Lobby 8:00am-4:30pm
Drive Thru 8:00am-5:30pm

Saturday
Lobby & Drive Thru 9:00am-noon

NEVER EVER

give your account number out! For lost or stolen cards please call the numbers below after hours...

LOST or STOLEN VISA Card

1-800-828-3901 or 1-800-991-4961

LOST or STOLEN ATM/Debit Card

1-800-236-2442

 lovemycreditunion.org

talk about savings.

say hello to the Sprint Credit Union Member Discount.

Consumers
Save

Businesses
Save

10% or 15%

On select regularly priced Sprint monthly service.

Plus, waived activation & upgrade fees (up to \$36 in savings each).

Learn more

- Call: 877.SAVE.4.CU
- Visit: www.SprintStoreLocator.com
- Click: LoveMyCreditUnion.org/Sprint



Be sure to mention this code for your discount

- Consumer: NACUC_ZZM
- Business: NACUC_ZDS_ZZM

Credit union membership validation is required.



Credit approval req. **Early Termination Fee** (sprint.com/etf): After 14 days, up to \$350/line. IL Discount: Available for eligible company employees or org. members (ongoing verification). Discounts subject to change according to the company's agreement with Sprint and are available upon request for monthly svc charges on select plans. Discount only applies to data buy-ups/add-ons for Unlimited, My Way and Family plans, Talk 450, and primary line on Talk Share 700. **Other Terms:** Offers and coverage not available everywhere or for all phones/networks/plans. Restrictions apply. See store or sprint.com or www.lovemycreditunion.org/Sprint. ©2014 Sprint. All rights reserved. Sprint and the logo are trademarks of Sprint. Other marks are the property of their respective owners.

2014 Sprint Item #800-20

©2014 CU Solutions Group 091614 3528

Account Update

Time flies by and we recommend that you update your owner and contact information. Contact a member service representative to verify that your beneficiary and/or joint owners are still accurate. Please make sure the credit union has your current address and phone number for contact information.

LOG IN TO MOBILE BANKING for a chance to win an **XBOX ONE!**



Every time you log in to It's Me 247 Mobile Web Banking you will be entered for a chance to win!

One (1) Prize Winner will be selected on or about March 7, 2016 by a random drawing from all qualified entries received by a participating credit union between January 1, 2016 and February 29, 2016. Each time an eligible member accesses their credit union account by logging in to **It's Me 247** Mobile Web Banking during the contest period they will be entered in the contest allowing for multiple entries. No purchase necessary. See your credit union for complete details, including contest rules, restrictions and alternate method of entry. Void where prohibited by law.

Our Mission:

The Grand Trunk (BC) Employees Federal Credit Union's sole purpose is to serve our members. As a member-owned, not-for-profit financial cooperative, the Grand Trunk (BC) Employees Federal Credit Union's commitment is to our MEMBERS!

Board of Directors: Milford Anguilm | Chris George | Sue Bess | LuAnn Schott | Janice Austin | Neils R. Hopkins | Charles Hoekstra
Supervisory Committee: Helen Tupper | Mike Cole | Carolyn Heath | Ric Hill